

Wireline drawing

View flat at a comfortable arm's length



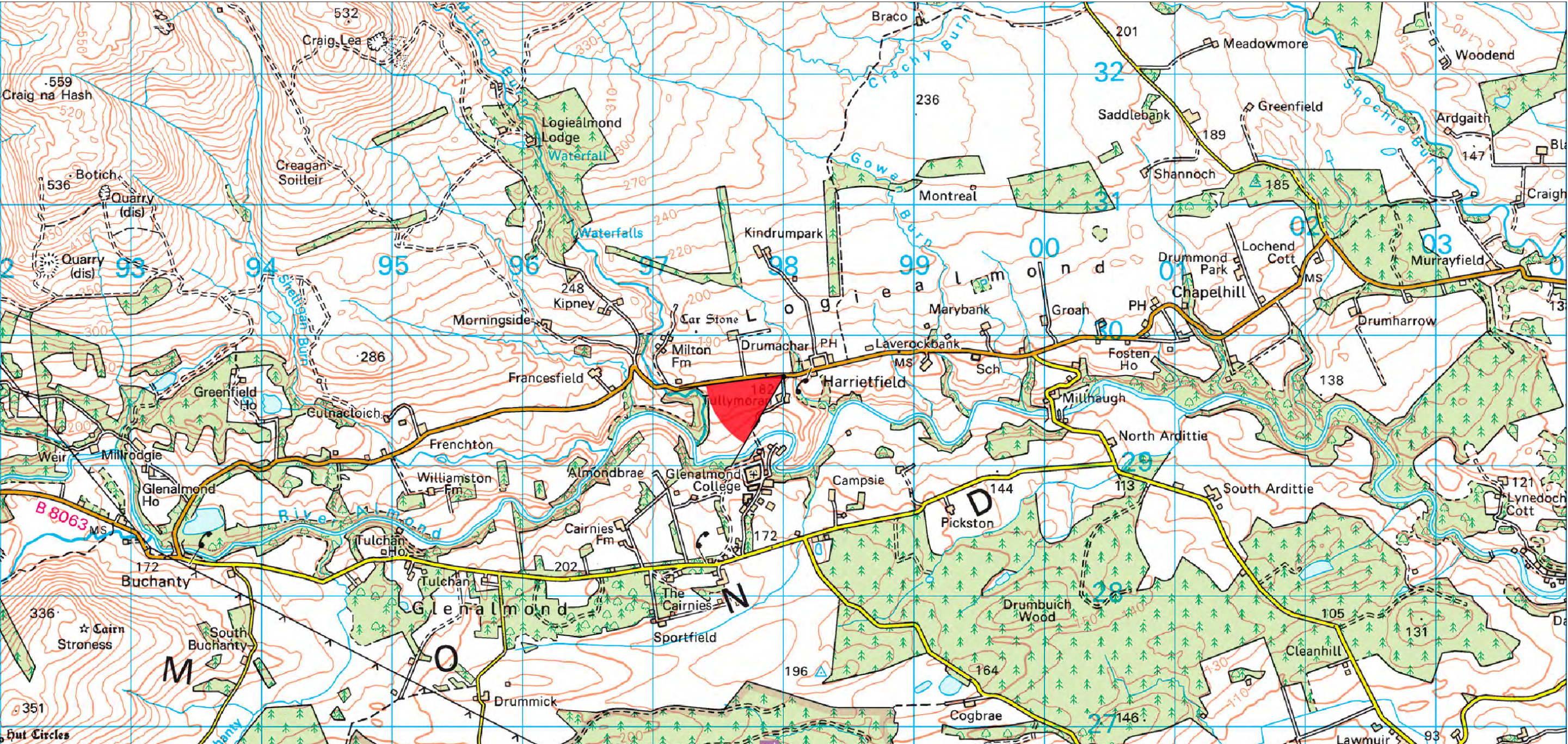
Baseline Photograph

View flat at a comfortable arm's length



Photomontage: Proposed Development

View flat at a comfortable arm's length

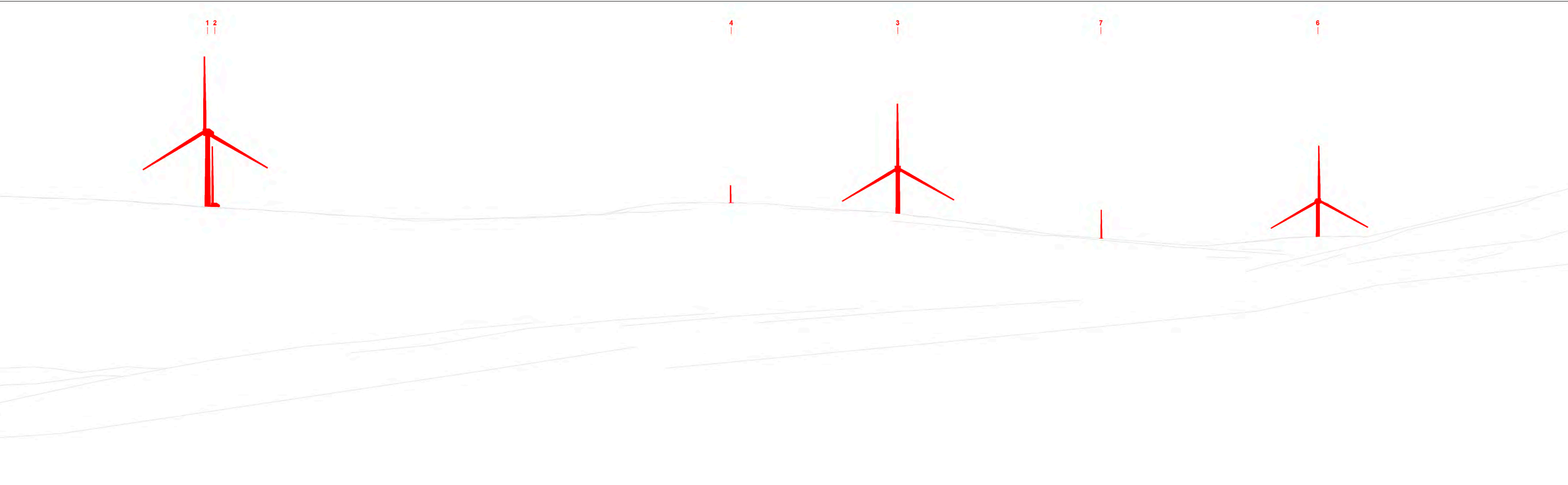


OS reference:	298001 E 729677 N	Horizontal field of view:	53.5° (planar projection)	Camera:	Canon EOS 5D MkIII
Eye level:	161 mAOD	Principal distance:	812.5 mm	Lens:	Canon AF 50mm f1.4
Direction of view:	240°	Paper size:	1189 x 841 mm (A0)	Camera height:	1.5 m
Nearest turbine:	5.62 km	Correct printed image size:	820 x 260 mm	Date and time:	22.08.24 08:50

© Crown copyright and database rights 2025 Ordnance Survey 0100031673. © Local Government Information House Limited copyright and database rights 2025 0100031673

Viewpoint 7: B8063, west of Harrietfield, Glen Almond

Eurowind EnergyTM



Wireline drawing

View flat at a comfortable arm's length



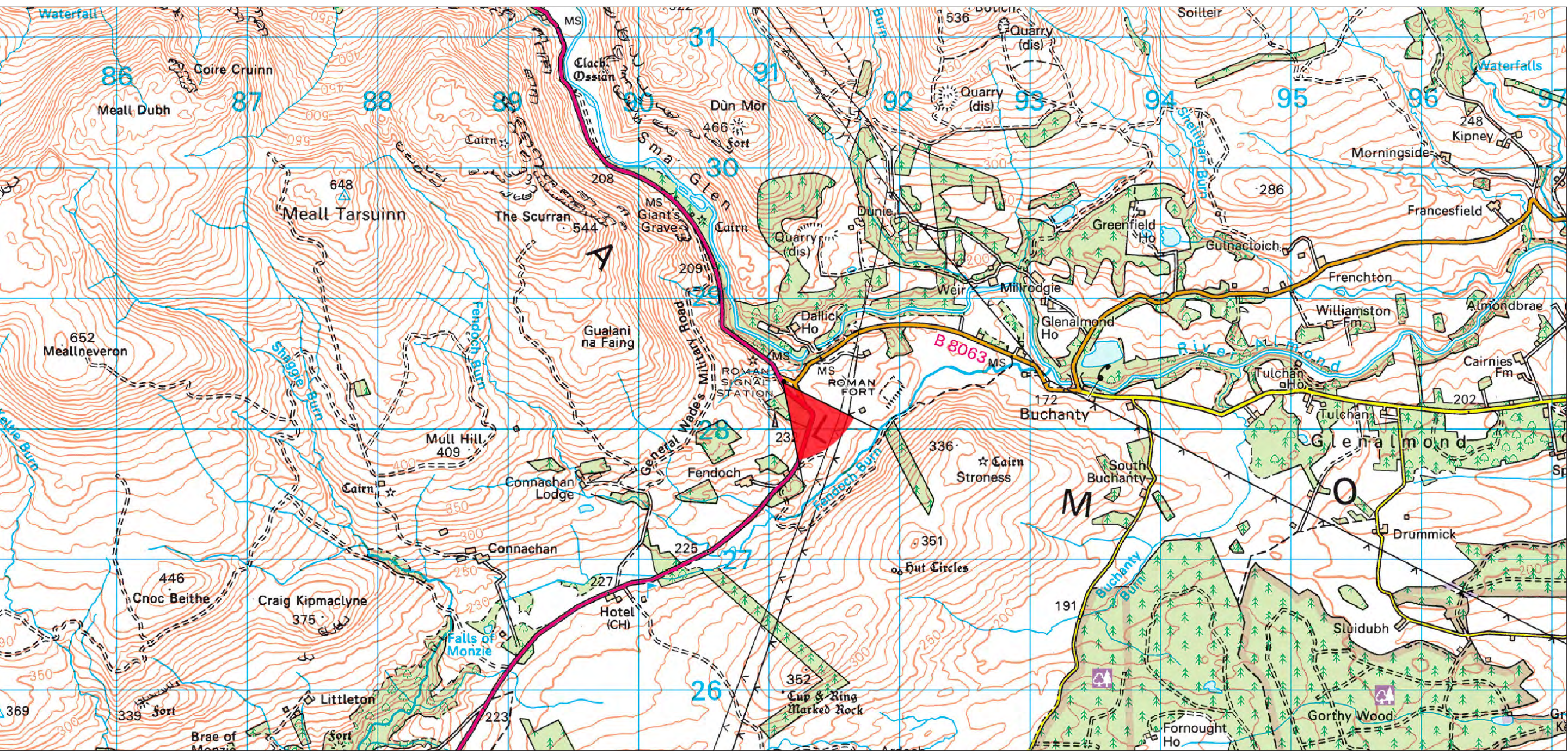
Baseline Photograph

View flat at a comfortable arm's length



Photomontage: Proposed Development

View flat at a comfortable arm's length



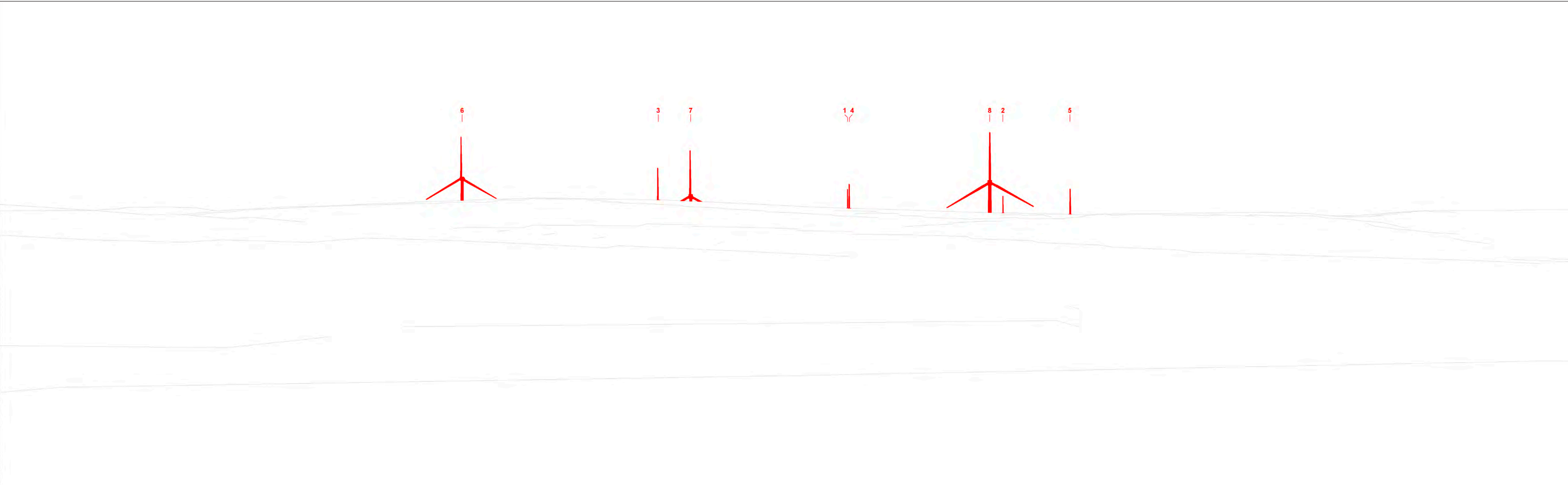
OS reference:	291111 E 728357 N	Horizontal field of view:	53.5° (planar projection)	Camera:	Canon EOS 5D MkIII
Eye level:	230 mAOD	Principal distance:	812.5 mm	Lens:	Canon AF 50mm f1.4
Direction of view:	142°	Paper size:	1189 x 841 mm (A0)	Camera height:	1.5 m
Nearest turbine:	1.73 km	Correct printed image size:	820 x 260 mm	Date and time:	26.08.24 07:40

© Crown copyright and database rights 2025 Ordnance Survey 0100031673. © Local Government Information House Limited copyright and database rights 2025 0100031673

Viewpoint 9: A822, Sma' Glen, Junction with B8063 Buchanty Road

Eurowind EnergyTM

Meallbrodden Energy Park | Public Exhibition



Wireline drawing

View flat at a comfortable arm's length



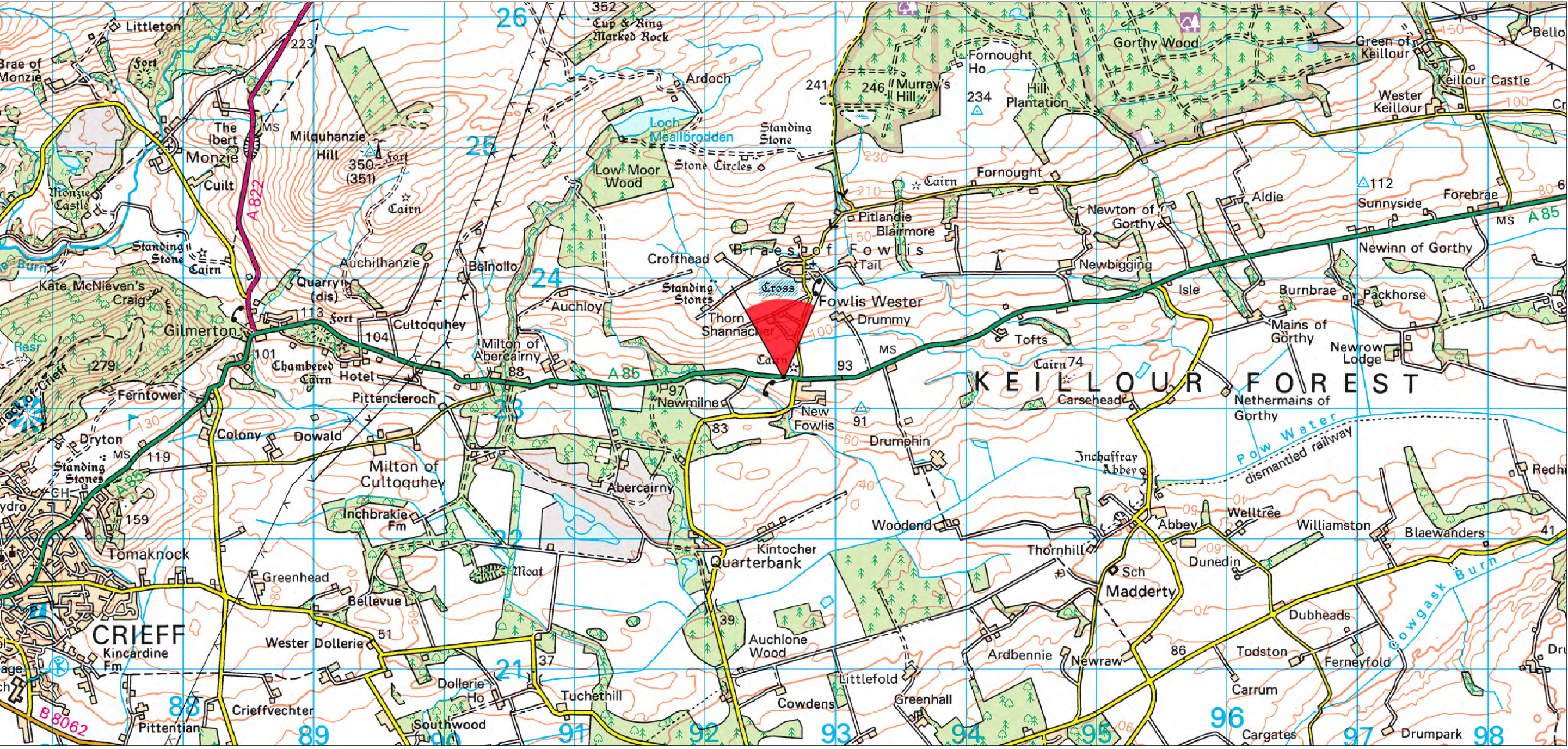
Baseline Photograph

View flat at a comfortable arm's length



Photomontage: Proposed Development

View flat at a comfortable arm's length



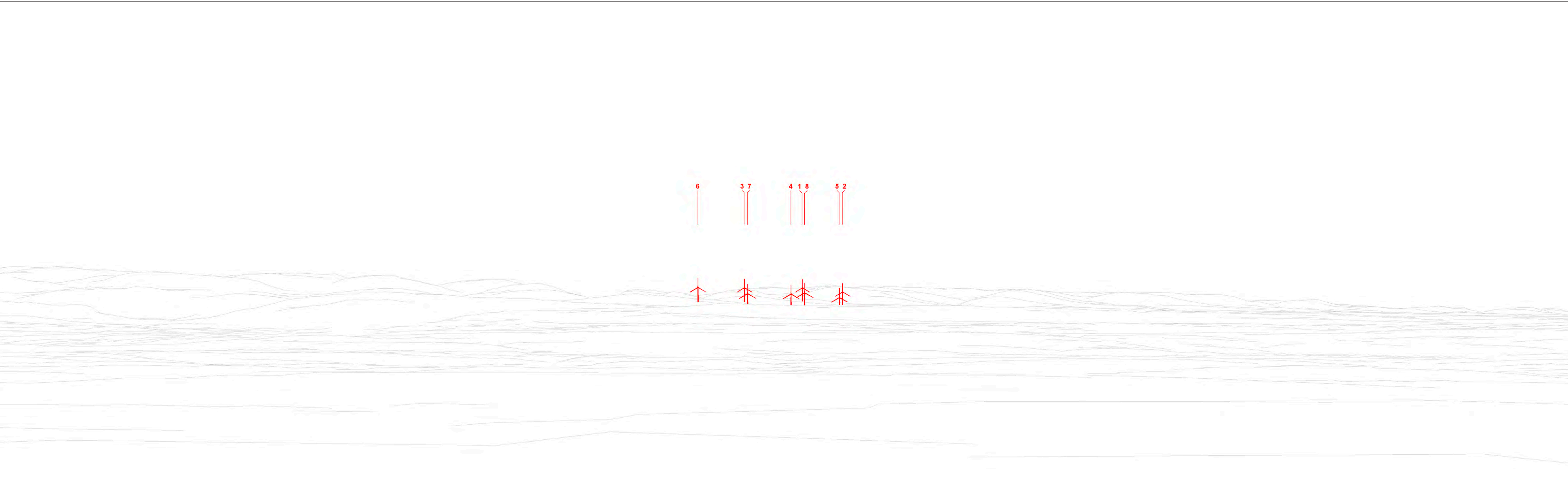
OS reference: 292602 E 723238 N
Eye level: 94 mAOD
Direction of view: 359°
Nearest turbine: 2.46 km

Horizontal field of view: 53.5° (planar projection)
Principal distance: 812.5 mm
Paper size: 1189 x 841 mm (A0)
Correct printed image size: 820 x 260 mm

Camera: Nikon Z6
Lens: Nikkor Z 50mm f1.8
Camera height: 1.5 m
Date and time: 09.04.25 13:59

Viewpoint 13: A85, New Fowlis

Eurowind EnergyTM



Wireline drawing

View flat at a comfortable arm's length



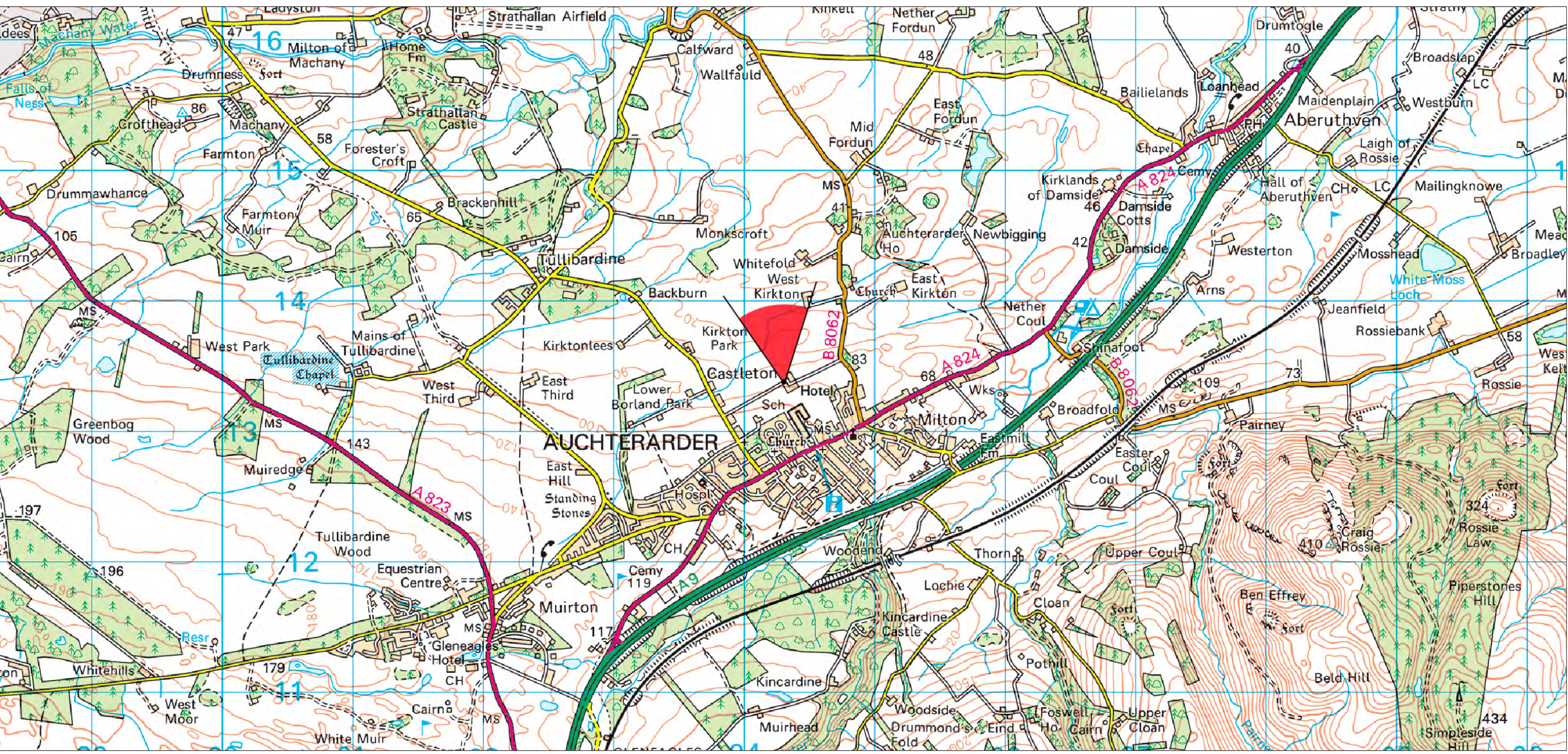
Baseline Photograph

View flat at a comfortable arm's length



Photomontage: Proposed Development

View flat at a comfortable arm's length

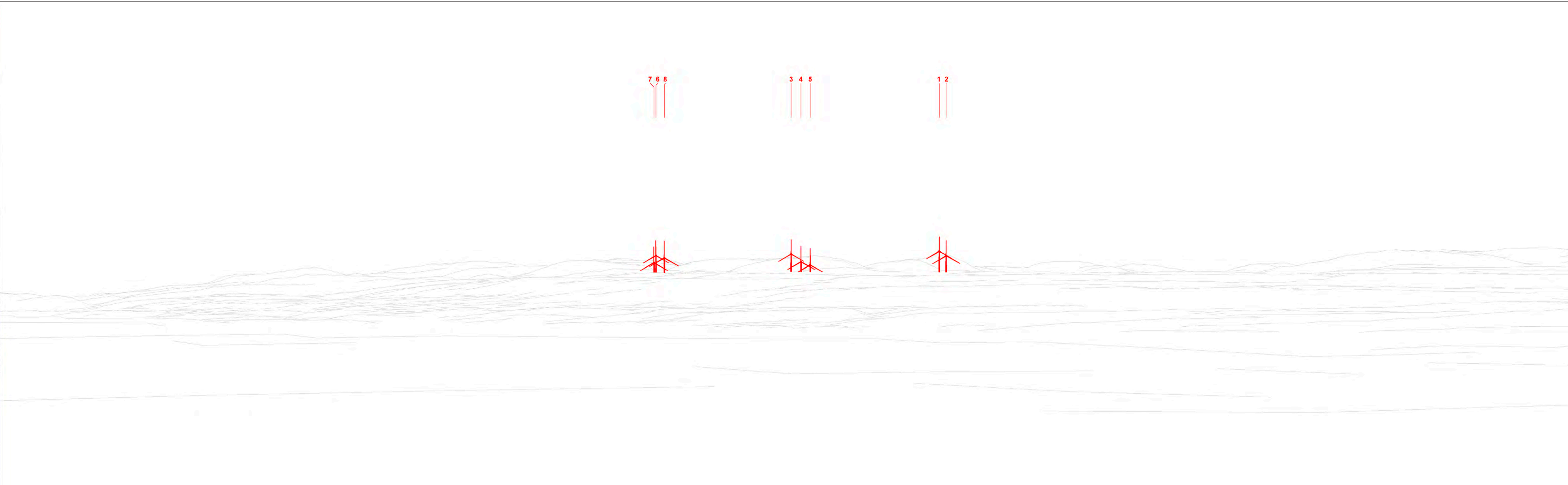


OS reference:	294301 E 713376 N	Horizontal field of view:	53.5° (planar projection)	Camera:	Canon EOS 5D MkIII
Eye level:	88 m AOD	Principal distance:	812.5 mm	Lens:	Canon AF 50mm f1.4
Direction of view:	352°	Paper size:	1189 x 841 mm (A0)	Camera height:	1.5 m
Nearest turbine:	12.40 km	Correct printed image size:	820 x 260 mm	Date and time:	22.08.24 11:56

© Crown copyright and database rights 2025 Ordnance Survey 0100031673. © Local Government Information House Limited copyright and database rights 2025 0100031673

Viewpoint 14: Core Path by Auchterarder Castle

Eurowind Energy™



Wireline drawing

View flat at a comfortable arm's length



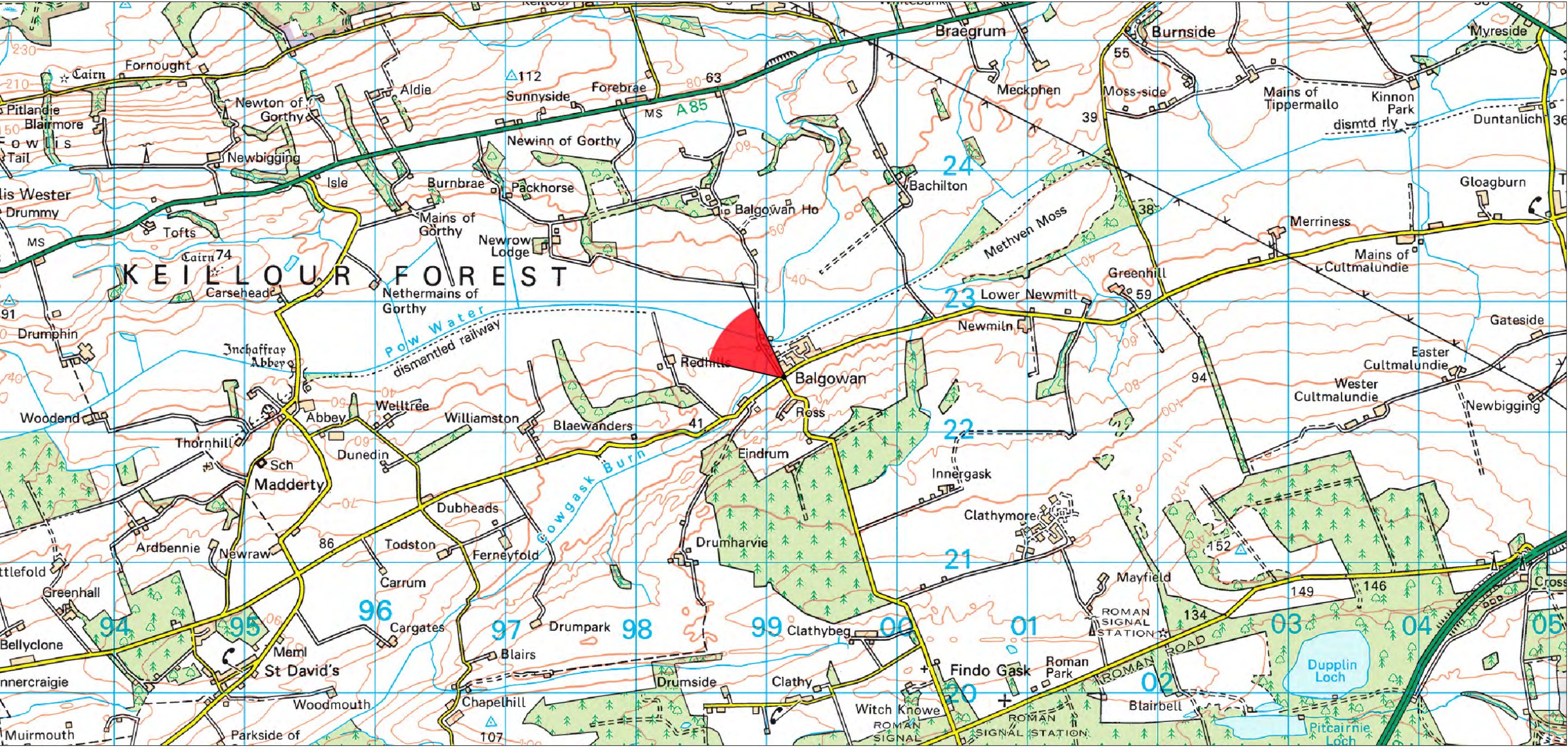
Baseline Photograph

View flat at a comfortable arm's length



Photomontage: Proposed Development

View flat at a comfortable arm's length



OS reference:	299131 E 722418 N	Horizontal field of view:	53.5° (planar projection)	Camera:	Canon EOS 5D MkIII
Eye level:	44 m AOD	Principal distance:	812.5 mm	Lens:	Canon AF 50mm f1.4
Direction of view:	302°	Paper size:	1189 x 841 mm (A0)	Camera height:	1.5 m
Nearest turbine:	7.12 km	Correct printed image size:	820 x 260 mm	Date and time:	22.08.24 10:30

© Crown copyright and database rights 2025 Ordnance Survey 0100031673. © Local Government Information House Limited copyright and database rights 2025 0100031673

Viewpoint 17: Western side of Balgowan Settlement

Eurowind Energy™